

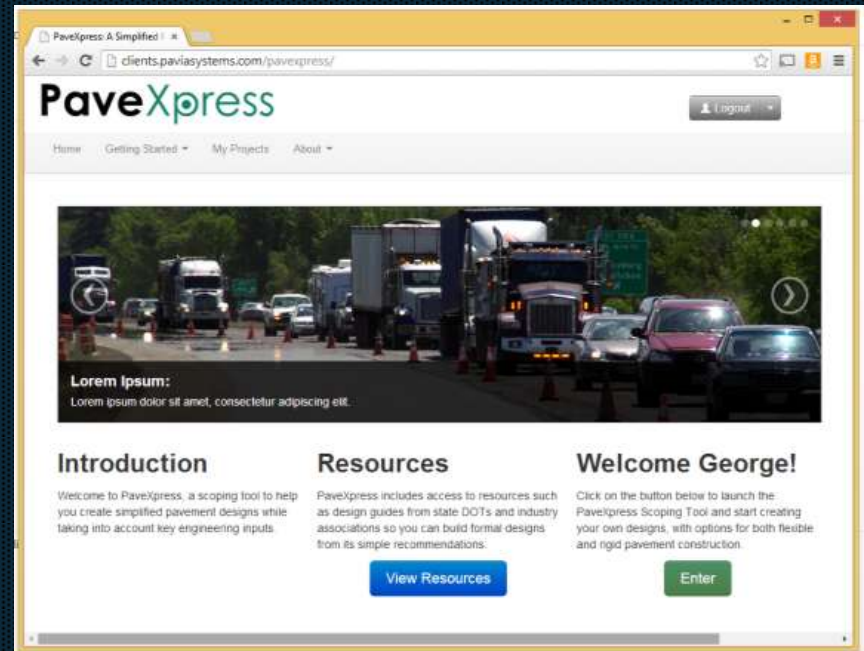
PaveXpress

An On-Line Pavement Design Tool



Presentation Agenda

- Introduction
- Overview of PaveXpress 2.0
- *PaveXpress* Demo
- Next Version for *PaveXpress*



Application Objectives

- Provide tool to develop technically sound *new and rehabilitation* pavement designs for roadway and parking lot pavements
- Provide a user-friendly, visually appealing, pavement design tool accessible to users on a variety of devices
- Provide a free application for conducting pavement designs following 1993 and 1998 AASHTO
- Provide resources to enhance understanding and comfort with pavement design



Potential Application Users

- Local Government Agencies
- A/E/C Firms
- Engineering Students
- State Transportation Agencies
- FHWA
- Foreign Companies and Governments



Guiding Principles for Application

- Provide accurate un-biased results...**be a trusted resource**
- Only ask the user for what is required to perform a technically sound design
- Where appropriate suggest industry accepted defaults to minimize user input
- Provide context sensitive help and guidance



Approach: Technical

- Provide technically sound designs using:
 - Flexible: AASHTO '93
 - Rigid: AASHTO '93 w/ '98 Supplement
 - Parking lot guidance (Flexible only)
- Use industry accepted standards and guidance
- Linkages to State and Local guidance
- Linkages to Pavement Interactive



Highlights of Version 2.0

New AC Pavement Design



New PCC Pavement Design



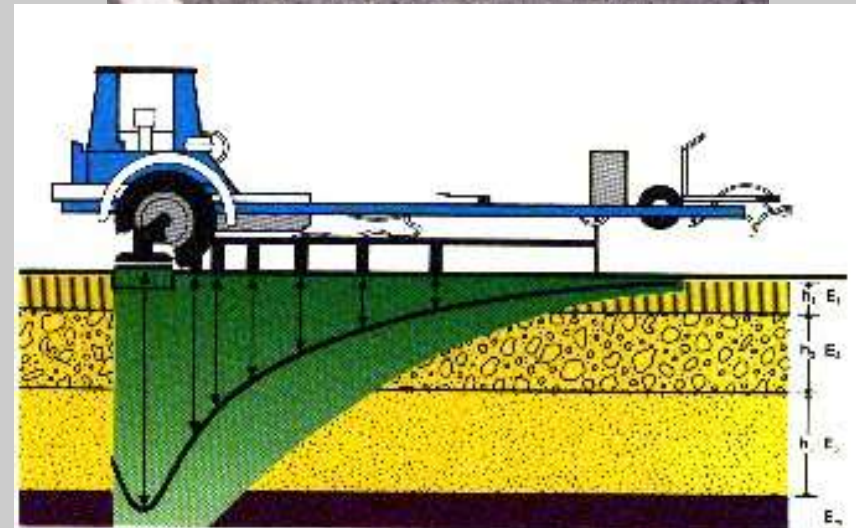
Highlights of Version 2.0

- New AC and PCC Pavement Design
- AC Overlay Design for Pavement Rehabilitation



Highlights of Version 2.0

- New AC and PCC Pavement Design
- AC Overlay Design for Pavement Rehabilitation
- Evaluation Methods for Existing AC Pavement
 - Condition Survey
 - Non-Destructive Deflection Testing



Highlights of Version 2.0

- New AC and PCC Pavement Design
- AC Overlay Design for Pavement Rehabilitation
- Evaluation Methods for Existing AC Pavement
 - Condition Survey
 - Non-Destructive Deflection Testing
- Includes Questions of Coring and Milling
 - Delamination/Stripping
 - Top-Down or Bottom-Up Cracking

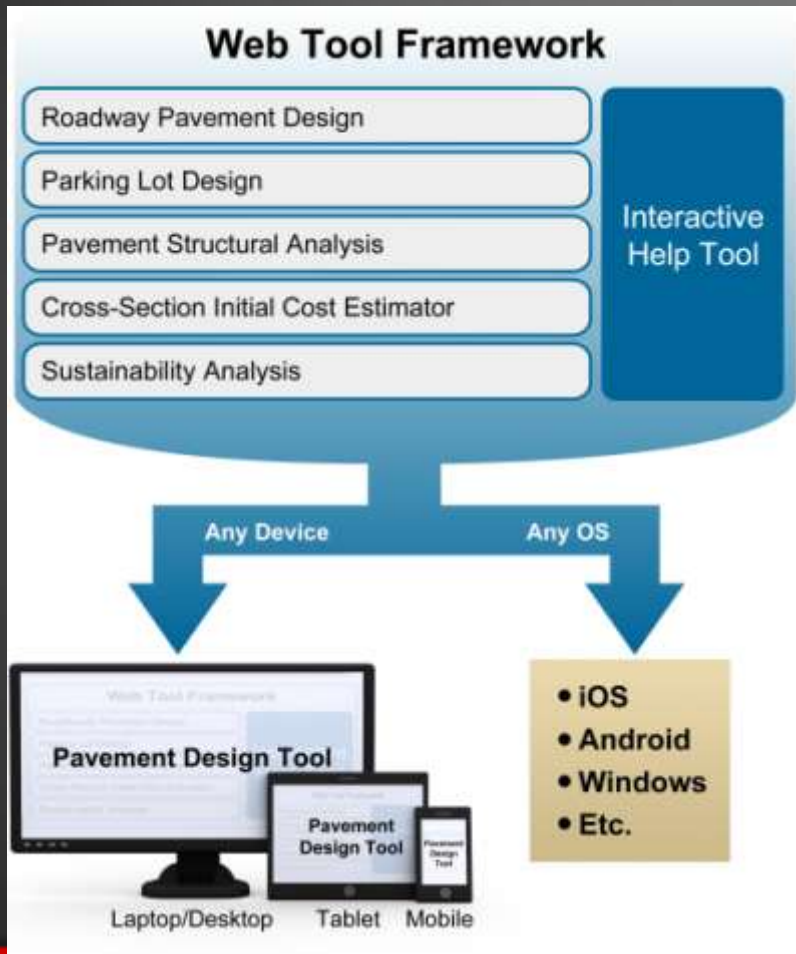


Highlights of Version 2.0

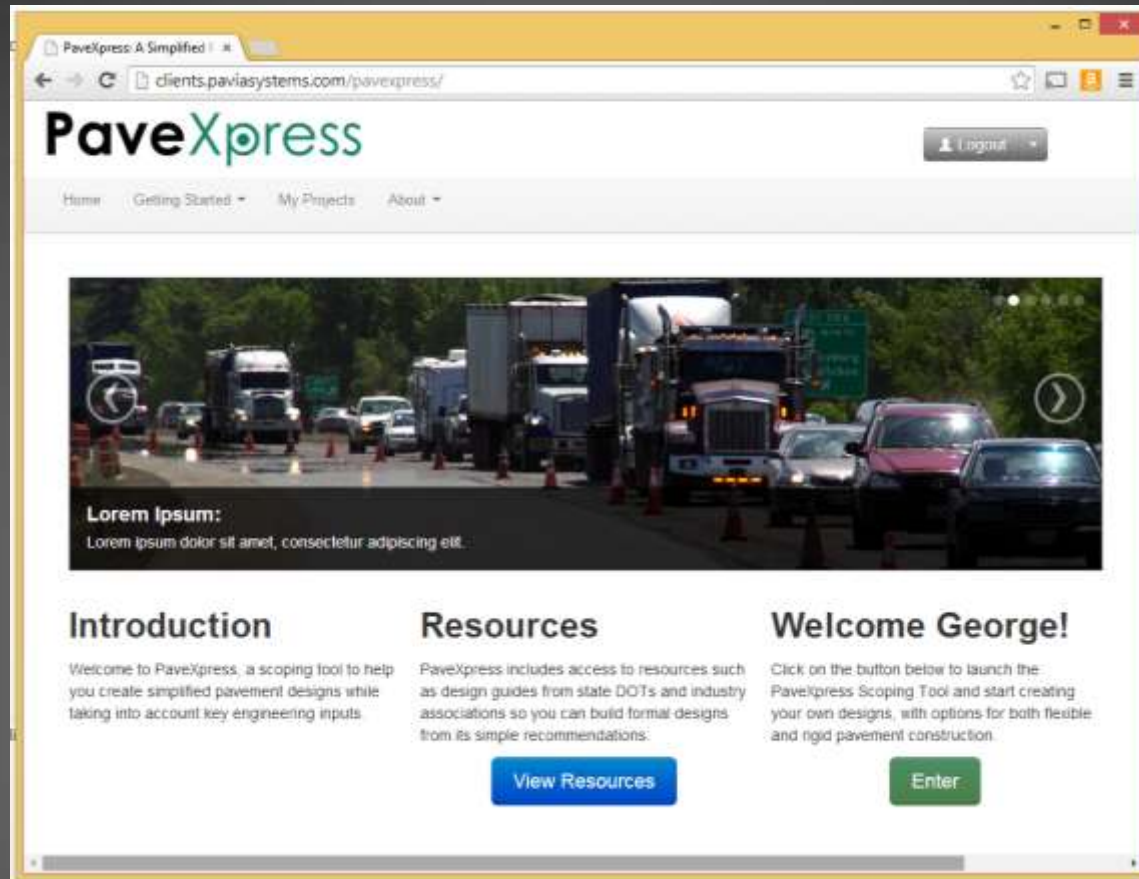
- New AC and PCC Pavement Design
- AC Overlay Design for Pavement Rehabilitation
- Evaluation Methods for Existing AC Pavement
 - Condition Survey
 - Non-Destructive Deflection Testing
- Includes Questions of Coring and Milling
 - Delamination/Stripping
 - Top-Down or Bottom-Up Cracking
- Adjustment to Existing Pavement Layer Coefficients



Approach: Web Delivery



- Browser based delivery
- Available via the web
- Supports all kinds of devices/OS
 - Desktops
 - Laptops
 - Tablets (7" – 10" - includes iPad Mini on up).
 - Handheld device capabilities
- Easily scalable and updatable



Let's take a Closer look!



Future of *PaveXpress*

A framework to continue to build upon:

- Simplified mechanistic design for Asphalt Pavements
- Pavement costing module
- Porous pavement design tool
- And more



Questions and Answers Time



Need More Information

- PaveXpress Weblink
 - www.pavexpressdesign.com
- Future questions can be directed to your local asphalt pavement association
 - Dr. Audrey Copeland of NAPA (Audrey@asphaltpavement.org)
 - Trenton Clark of VAA (tclark@vaasphalt.com)
 - George White of Pavia (George@paviasystems.com)



PaveXpress

Version 2.0 - A Simplified Pavement Design Tool

